



FOR LEASE

9011 NW SOUTH RIVER DR.
MEDLEY, FL 33166
WATERFRONT INDUSTRIAL LAND

STL
COMMERCIAL

OVERVIEW

Opportunity to acquire an affordably priced waterfront lot, strategically located in the industrial hub of Medley. Situated near major thoroughfares such as the Palmetto Expressway and Okeechobee Road, the property offers excellent connectivity for businesses. It is also a stable buy and hold for an investor seeking waterfront land at a low price. The property has frontage on River Drive as well as frontage on the river adjacent to Okeechobee Road. Okeechobee Road sees 60,500 vehicles per day.

SITE SUMMARY

ASKING RATE: \$5.50/SF

LOT SIZE: 10,116 SF

ZONING: M-1/Industrial

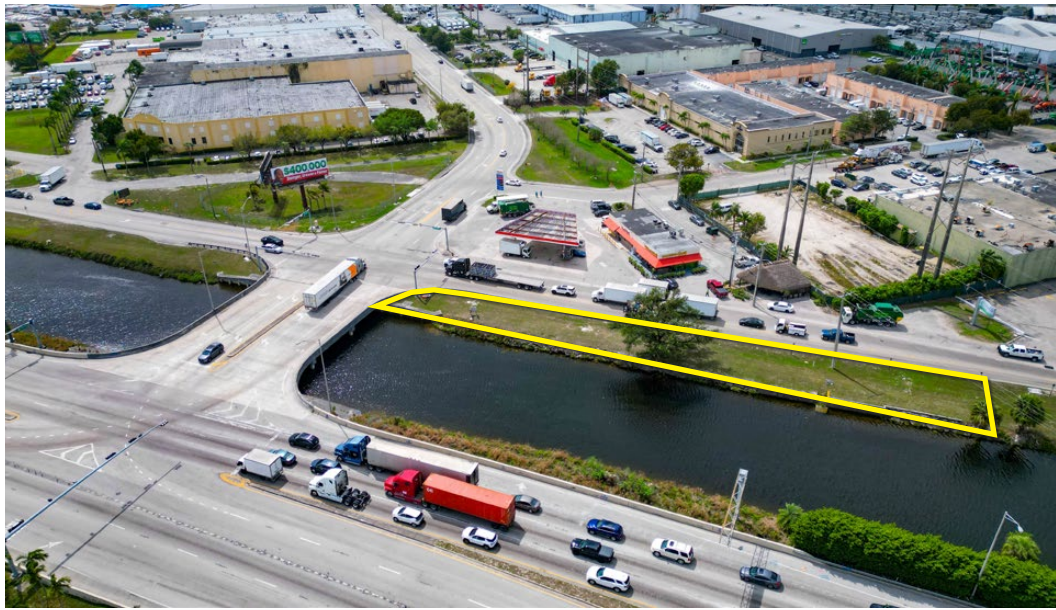
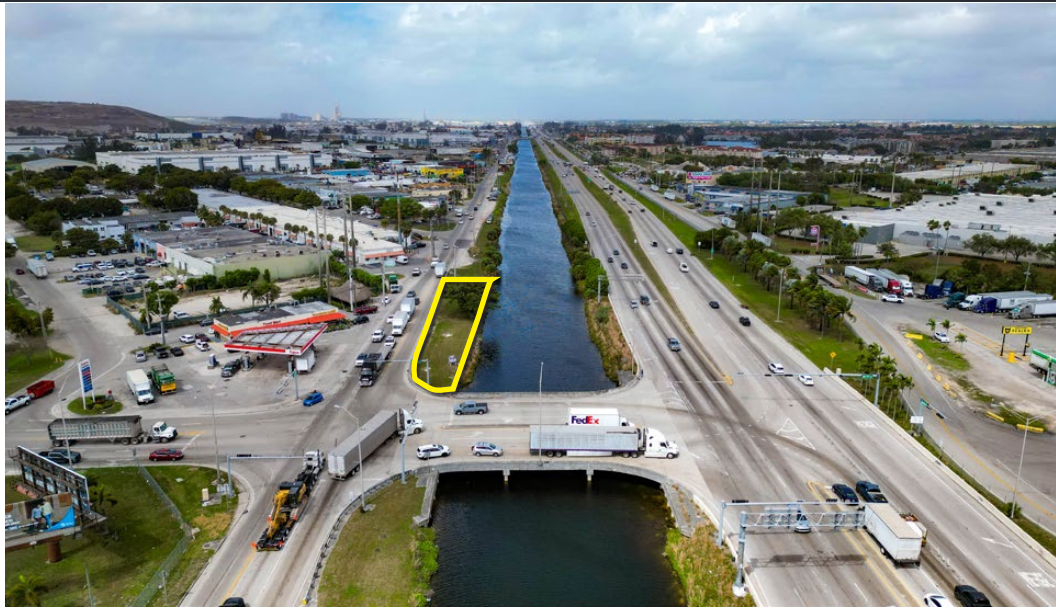
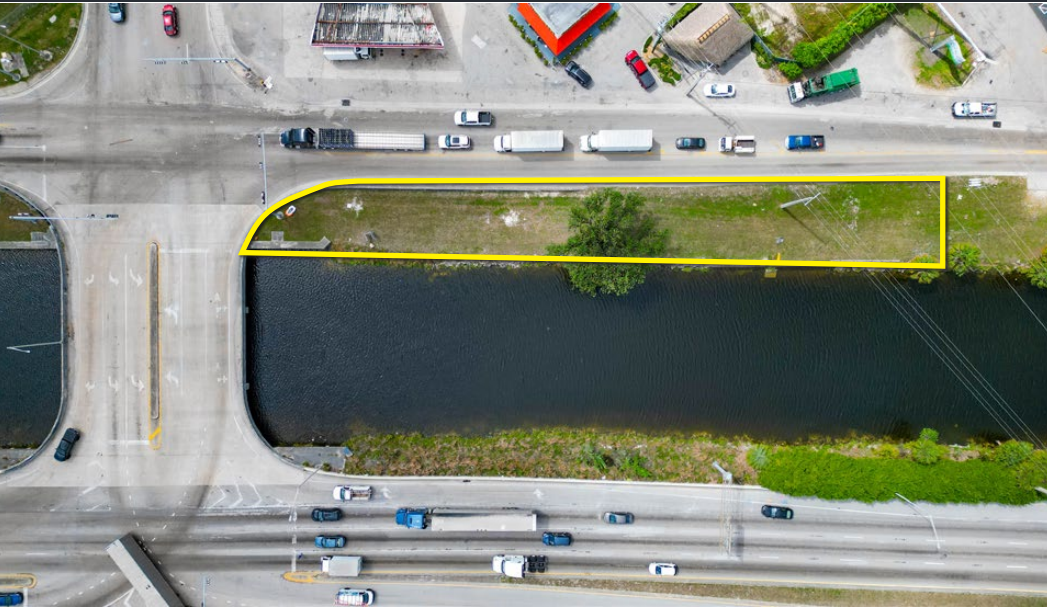
HIGHLIGHTS

- . PROXIMITY TO KEY HIGHWAYS AND ROADS
- . ACCESSIBILITY
- . MAJOR EXPOSURE



9011 NW S RIVER DRIVE - MEDLEY, FL 33166

AERIAL IMAGES



9011 NW S RIVER DRIVE - MEDLEY, FL 33166

BRIAN PINEIRO | COMMERCIAL ADVISOR | 786.382.9900

This information has been obtained from sources believed reliable. We have not verified it and make no guarantee, warranty or representation about it.





BRIAN PINEIRO
COMMERCIAL ADVISOR
BRIAN@STL-ADVISORS.COM
786.382.9900